

White Monolith / LOSTINARCHITECTURE

06

NOV 2011

Uploaded by Megan Jett — Filed under: Houses , Selected , Austria, LOSTINARCHITECTURE, Mistelbach



Gebhard Sengmüller

Architects: [LOSTINARCHITECTURE](#)

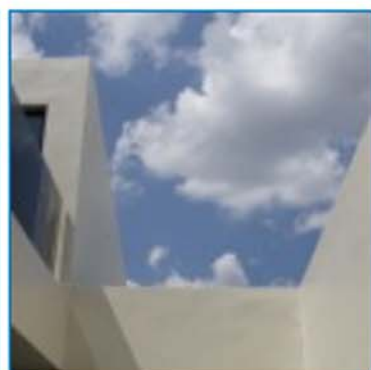
Location: [Mistelbach, Austria](#)

Structural Engineer: [DI Karl Fischer](#)

Project Year: **2011**

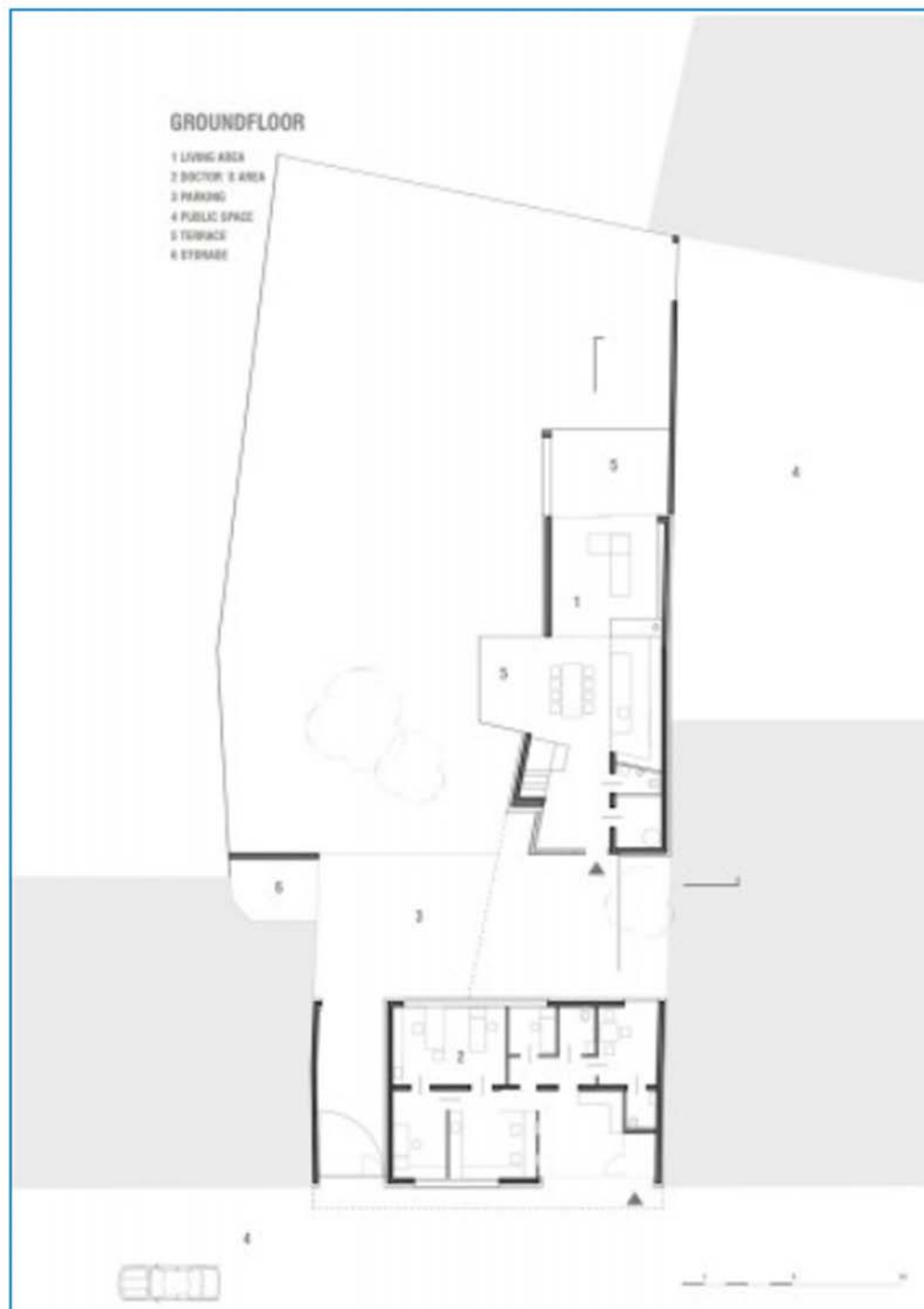
Project Area: **315.94 sqm**

Photographs: [Gebhard Sengmüller](#)



Project Description

In the rural Weinviertel region of Lower Austria individual examples of new architecture are generally introduced with caution and reticence. This makes it all the more surprising when suddenly, on a busy street in the densely built-up part of the town of Mistelbach (population 13,000), not far from the main square, you come across a white monolith that speaks a self-assured architectural language.



Floor Plan

Building Cast in One Piece

The dwelling house with doctor's surgery presents a closed facade towards the street. However, not only has any possible severity in its appearance been alleviated by intelligently conceived folds with dynamic edges but, in conjunction with the white color used, the building appears friendly and inviting.